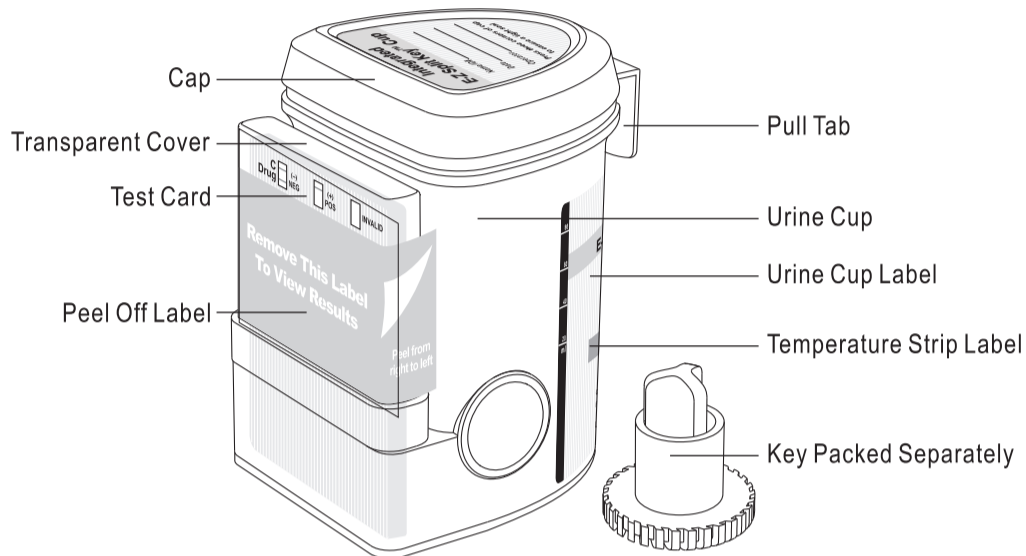
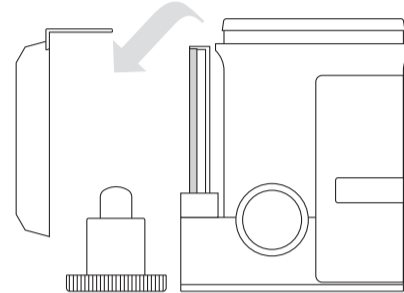


## Integrated E-Z Split Key™ Cup Procedure Card with Adulteration Test

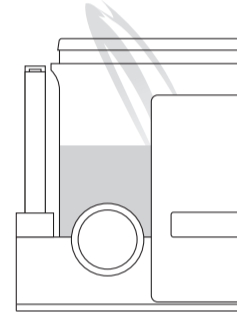


Date \_\_\_\_\_ / Initials \_\_\_\_\_ **Security Seal** — Security Seal Label

**1** Remove cap. (Key is held by technician.)



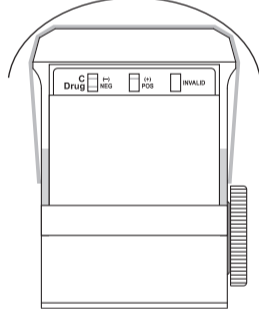
**2** Donor provides specimen and secures cap. Note: Secure cap by pressing down on all three corners.



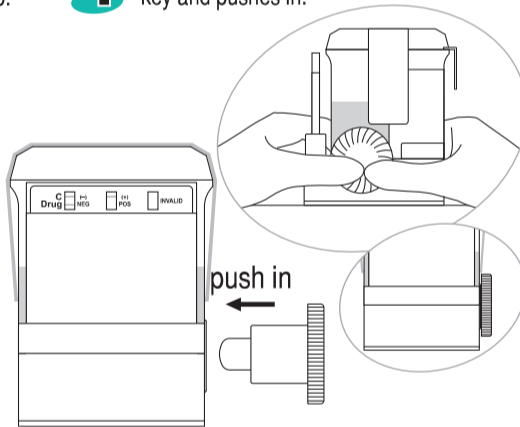
**3** Check cap for tight seal. Technician dates and initials the security seal and places security seal over cap.

Date \_\_\_\_\_ / Initials \_\_\_\_\_ **Security Seal**

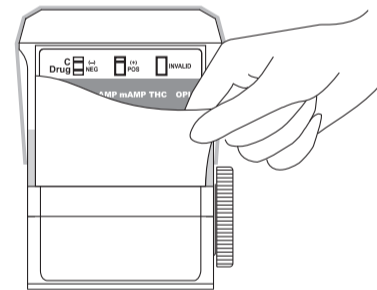
Place security seal over cup



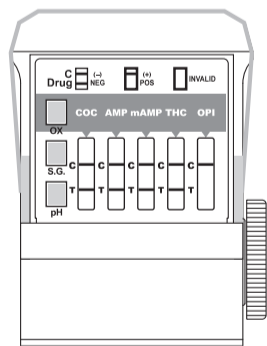
**4** On a flat surface, technician inserts key and pushes in.



**5** Peel off the label to view results

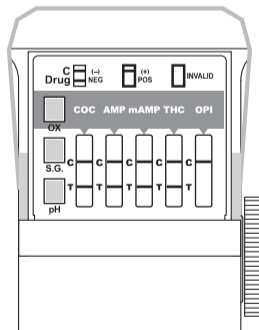


**6** Read adulteration test results between 2 - 5 minutes.



■ Adulteration Strip  
See color chart and package insert for interpretation.

**7** Test is read while in reaction well.



Example: test shows positive for OPI



Read results at 5 minutes.

**C** Drug — **NEGATIVE**

**C** Drug — **POSITIVE**

**C** Drug — **INVALID**

All positive results are presumptive and should be confirmed by an alternative method (e.g. GC/MS)

**8** A photocopy of the results can be made by placing the entire cup with the card face down on the copier.

