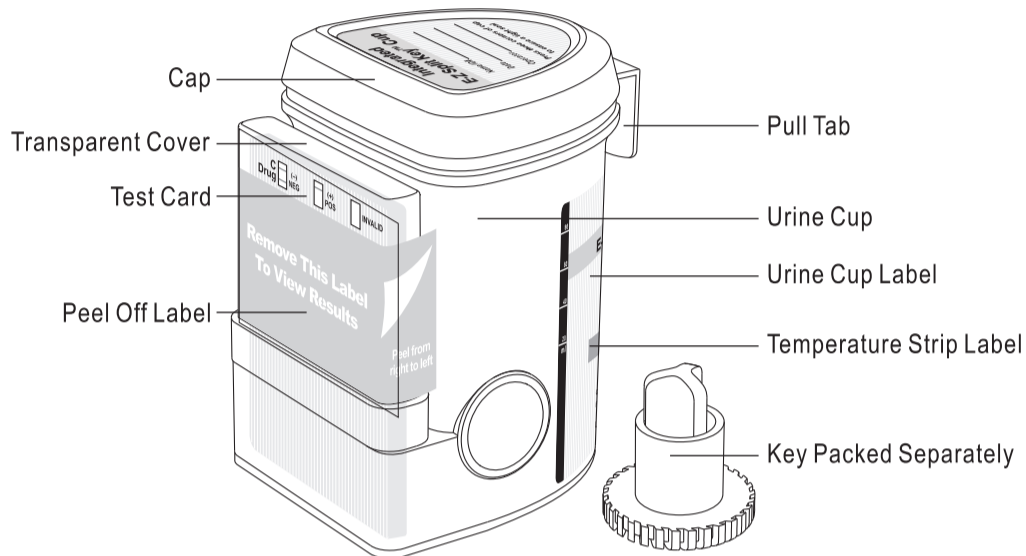
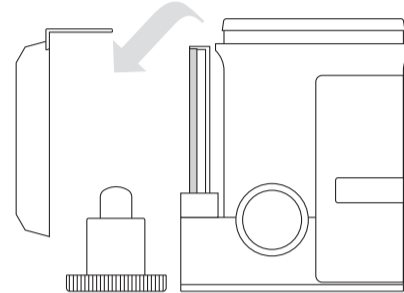


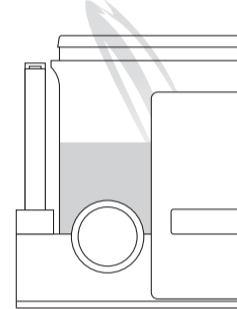
Integrated E-Z Split Key™ Cup Procedure Card with Adulteration Test



1 Remove cap.
(Key is held by technician.)



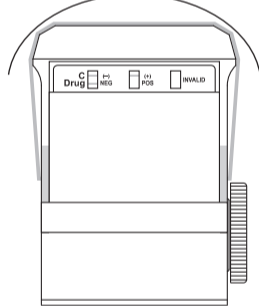
2 Donor provides specimen and secures cap. Note: Secure cap by pressing down on all three corners.



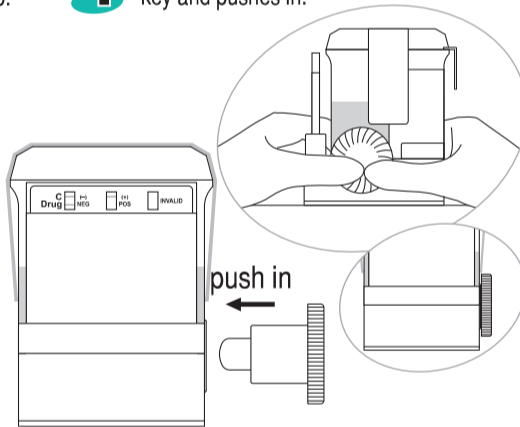
3 Check cap for tight seal. Technician dates and initials the security seal and places security seal over cap.



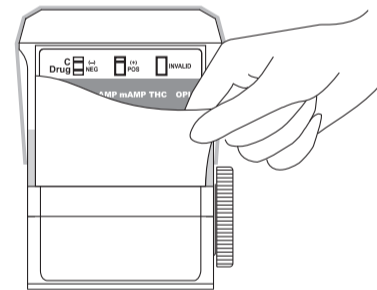
Place security seal over cup



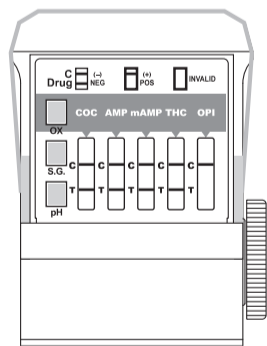
4 On a flat surface, technician inserts key and pushes in.



5 Peel off the label to view results

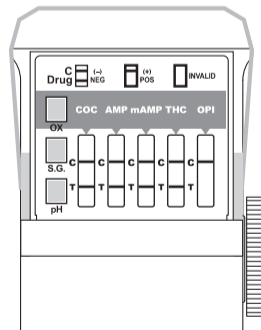


6 Read adulteration test results between 2 - 5 minutes.

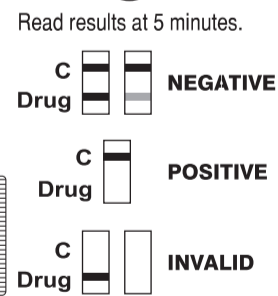


Adulteration Strip
See color chart and package insert for interpretation.

7 Test is read while in reaction well.



Example: test shows positive for OPI



All positive results are presumptive and should be confirmed by an alternative method (e.g. GC/MS)

8 A photocopy of the results can be made by placing the entire cup with the card face down on the copier.

