

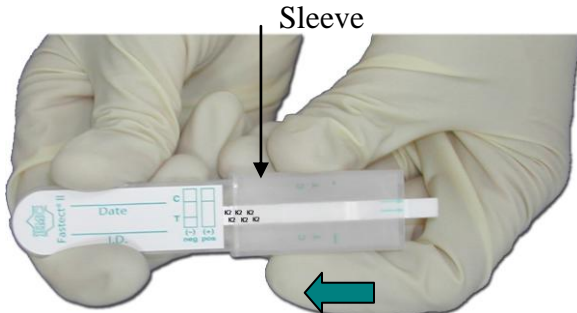


Fastect® II Reference Guide

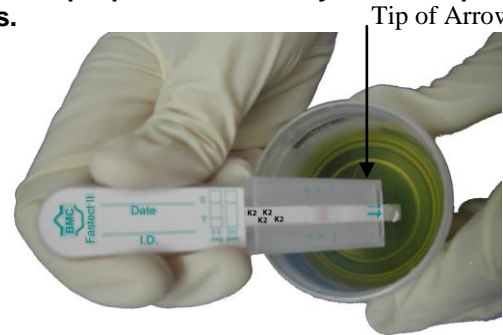
The Fastect® II Drug Screen Dipstick Test is a simple one-step dipstick device for the rapid qualitative detection of drugs of abuse in human urine.

Fastect® II Procedures -- Refer to package insert for detailed instructions and technical information.

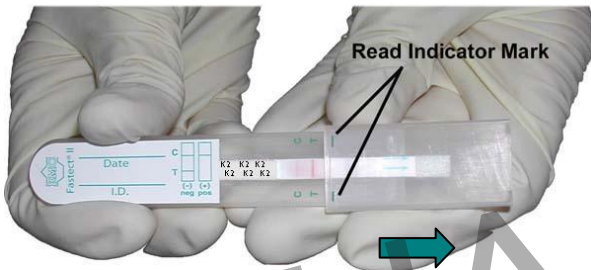
1. **Remove** the Fastect® II test device from the sealed pouch and **slide** the protective sleeve all the way up.



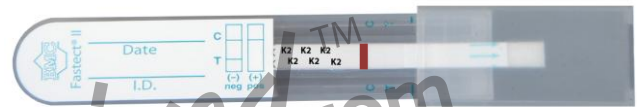
2. Dip the sample pad of the test device into the urine specimen to the maximum dip level for at least 10 seconds. **Dip up to and not beyond the tips of the arrows.**



3. **Slide** the sleeve down to the **read indicator mark** and lay the device on a level surface.



4. **Read** the results once the **control band (C)** appears (in approximately 5 minutes). See package insert.

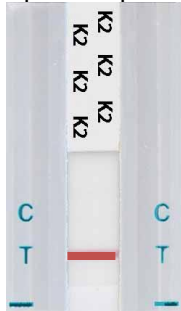


Interpreting Fastect® II Test Results

Invalid Result

When **no** band appears in the **CONTROL (C)** region, the test is **invalid** even if there is a band in the test region. Check testing procedures, and samples. Repeat the test with a new device.

Example Interpretation:



K2: Invalid

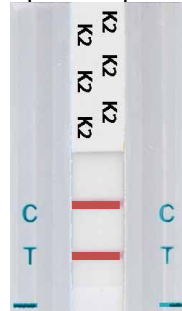
Negative Result

For each test, two colored bands should be observed:

- One in the **CONTROL (C)** region
- One in the **specific TEST** region

The color of the test band may be slightly darker or lighter than the control band. Any band that can be seen visually is a **negative** result.

Example Interpretation:

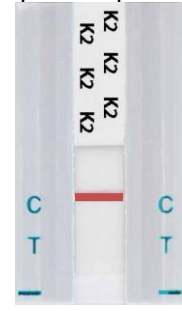


K2: Negative

Presumptive Positive Result

A colored band at the **CONTROL (C)** region should be observed. When there is no colored band at the specific **TEST** region, the test is presumptive positive for that particular drug.

Example Interpretation:



K2: Positive

NEW

Fastect® II Drug Screen K2 Dipstick

*Synthetic Marijuana
also known as:*

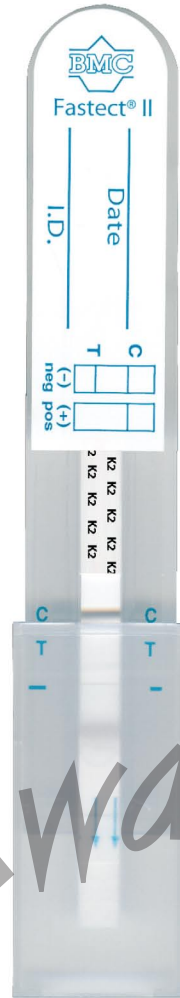
"K2"

"Spice"

"Spice Gold"

"Blonde"

"Purple Haze"



New! Drug Screen **K2** Dipstick

- Results in 5 minutes
- Easy to use, easy to read
- Results can be easily photocopied to maintain a permanent record

The Fastect® II K2 Dipstick detects synthetic marijuana instantly and accurately. With its simple to use technology and reliable results, the Fastect® II K2 Dipstick test is the best method for detecting synthetic marijuana .

Drugs of Abuse Test

Synthetic Marijuana (K2)

Cut-off Level

10 ng/mL

*For Forensic Use Only

CLIAwaived.com

Distributed by: CLIAwaived.com™

San Diego, CA 92121

Toll-free: 888-882-7739